

F20/F20A Series Underwater Light

AUTOMATIC COLOR-CHANGING

Specialized for colorful water features and fountain shows



Waterproof Standard

IP68

Installation

Underwater/Floor

Material

Stainless Steel AISI 304

IP68  E331243

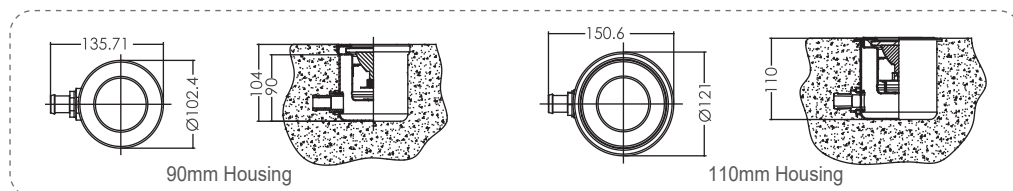
 **Emaux**
water technology

Pool & Spa Equipments

www.emauxgroup.com

F20 SERIES FOUNTAIN LIGHT

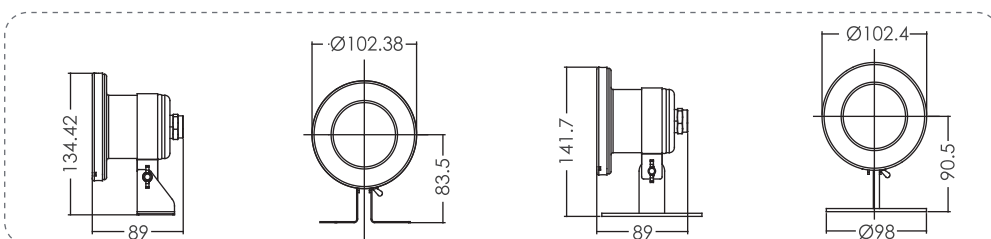
Floor mount (with a 90mm/110mm Stainless steel housing) • cable 2.5m • halogen or LED bulb



Code	Model	Watt/Voltage	Illuminance (lux)	Description
88042807	UL-F20	20W/12V	1039	MR16 Halogen Lamp, Warm White, 90mm Housing
88045407	UL-F20L	20W/12V	1039	MR16 Halogen Lamp, Warm White, 110mm Housing
88044207	LED-F20	1W/12V	130 (Color) 80 (Cool White)	MR16 Two-Pin, 18 LEDs Bulb, Automatic Changing Color/Cool White/Blue 90mm Housing

F20A SERIES FOUNTAIN LIGHT

Floor mount (with Stainless steel base) • cable 2.5m • halogen or LED bulb



Code	Model	Watt/Voltage	Illuminance (lux)	Description
88044407	UL-F20A	20W/12V	1039	MR16 Halogen Lamp, Warm White
88044307	LED-F20A	1W/12V	130 (Color) 80 (White)	MR16 Two-Pin, 18 LEDs Bulb, Automatic Changing Color/Cool White/Blue

LIGHT BULBS FOR F20 and F20A Series Light

Code	Model	Watt/Voltage	Description
04011016	N/A	1W/12V	MR16 Two-Pin, 18 LEDs Bulb, Automatic Changing Color
04011015	N/A	1W/12V	MR16 Two-Pin, 18 LEDs Bulb, Cool White
04011034	N/A	1W/12V	MR16 Two-Pin, 18 LEDs Bulb, Blue
04011001	N/A	20W/12V	MR16 Halogen Lamp, Color lens (RGB)



EMAUX WATER TECHNOLOGY CO., LTD

ADDRESS G/F 41 TIN HAU TEMPLE ROAD,
NORTH POINT, HONG KONG
PHONE +852 2832 9880
www.emauxgroup.com

Pool & Spa Equipments

STRIVE FOR CLEAR WATER

Available from:

Chainaris Phuket Engineering Co., Ltd.
63/13 Moo.2, T.Vichit, A.Muang Phuket 83000
Tel: 076-513100-3 Fax: 076-513105
Line: @chainaris, @chainarishop



ALL SPECIFICATIONS ARE SUBJECT TO CHANGE WITHOUT NOTICE
© 2018 EMAUX WATER TECHNOLOGY CO., LTD. ALL RIGHTS RESERVED.